

Plot 102, Elder Brook Park, Neasham Road, Darlington, DL2 1DL.
£219,995

estates⁴
‘The Art of Property’



Plot 102, Elder Brook Park, Neasham Road, Darlington, DL2 1DL.

£219,995

Council Tax Band:

** PART EXCHANGE AVAILABLE ** 5% PAID TOWARDS DEPOSIT FOR FIRST TIMER BUYERS AND THOSE IN RENTED **

Integrated appliances: Fridge/freezer, dishwasher, washing machine, oven, hob, extractor hood, flooring throughout and turf to rear garden.

The Norwich is a perfectly-proportioned 3-bedroom home designed for couples, young families and right-sizers alike. Designed to the very highest standard, the property features fixtures from brands such as Porcelanosa, Ideal Standard, Bosch and Hansgrohe. It also comes complete with HIVE heating.

Downstairs, the Norwich boasts a front aspect kitchen/dining area and a generous lounge at the rear of the property. Bifold doors lead out from the lounge to the rear garden. On the first floor, you'll find a stunning master bedroom with fitted wardrobe and an en-suite bathroom. There are also two further bedrooms, a family bathroom and a downstairs cloakroom.

EPC RATING: B

These houses are sold on a FREEHOLD basis.

There is an estate management charge of approx.

£110+VAT pa (23/24)

Principal elevation

Entrance hallway

Lounge

18'0" x 9'6" (5.49 x 2.92)

Kitchen/dining area

18'0" x 7'3" (5.49 x 2.21)

Ground floor w/c

First floor landing

Principal bedroom

11'1" x 8'7" (3.40 x 2.64)

En-suite

10'4" x 5'2" (3.15 x 1.60)

Second bedroom

9'7" x 8'5" (2.94 x 2.59)

Third bedroom

9'1" x 6'3" (2.77 x 1.93)

Family bathroom

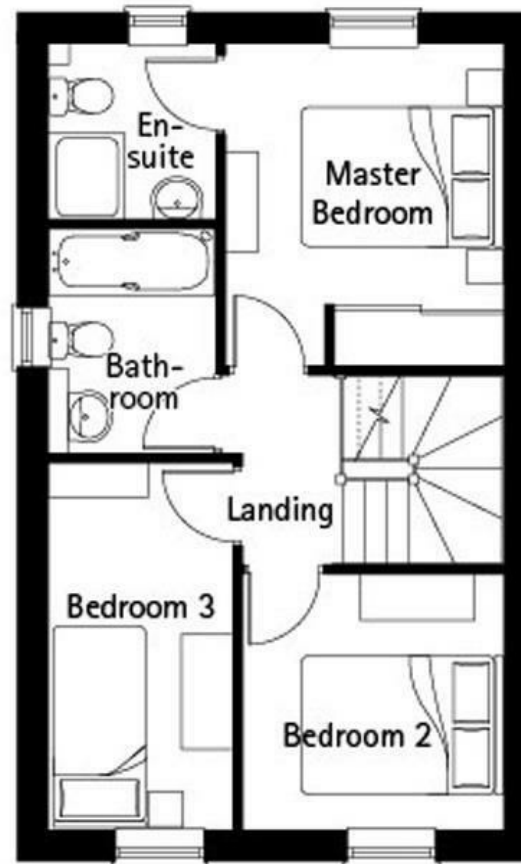
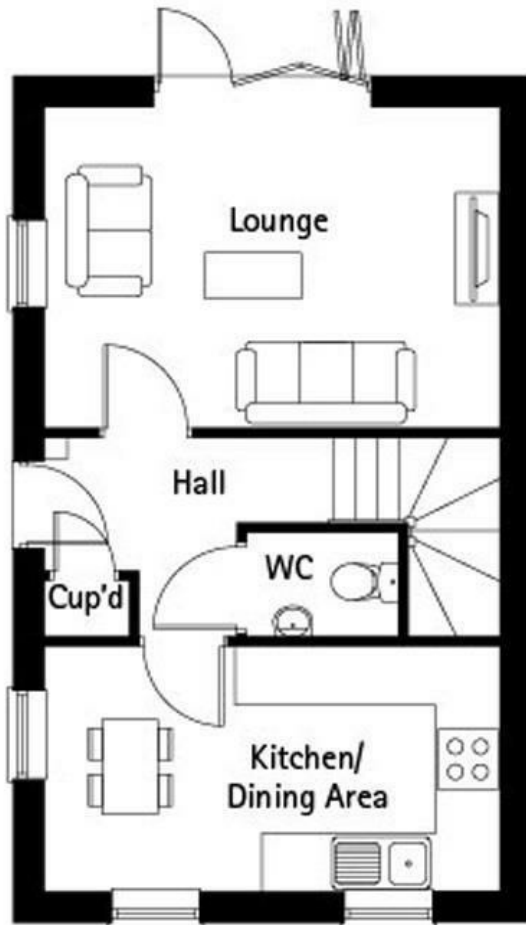
7'8" x 6'5" (2.36 x 1.96)

Rear garden





Business Central 2 Union Square
 Central Park
 Darlington
 County Durham
 DL1 1GL
 01325 804850
 sales@estatesgroup.co.uk
<https://estates-theartofproperty.co.uk/>



Energy Efficiency Rating		Current	Potential
<i>Very energy efficient - lower running costs</i>			
(92 plus) A			
(81-91) B			
(69-80) C			
(55-68) D			
(39-54) E			
(21-38) F			
(1-20) G			
<i>Not energy efficient - higher running costs</i>			
England & Wales		EU Directive 2002/91/EC	